



INDIUM SENSOR

Elektronische Geräte für Industrie und Umwelt

Infrared radiation measuring head type 8.1

Infrared radiation

The direct and diffuse solar radiation in the range from 700 nm up to 5000 reaching the ground is called infrared radiation.

Infrared measuring head type 8.1

The sensor detects almost 30 % of the sunlight in the range of 800 nm to 1100 nm including the most relevant part of IR.

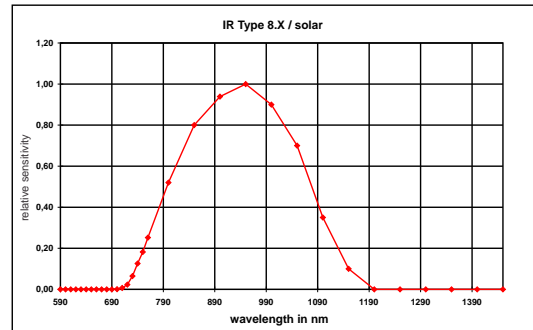
Measuring results are allowing immediate conclusions about medically and biologically relevant connections by comparing them to other spectral ranges.

The measuring head may be used in medicine, biological research, weather information and forecast systems, in climate research and for public information in general.

The measuring head may be used in medicine, biological research, weather information and forecast systems, in climate research and for public information in general.

The aluminum housing is weatherproof, the dome is made of optical glass.

The measuring results are cosine corrected.



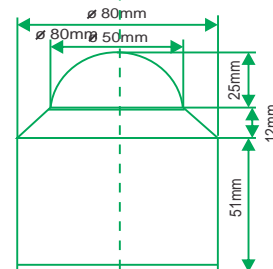
Technical specifications

Measuring range	0 - ca. 400 W/m ²
Spectr. sensitivity	800 nm - 1100 nm
Max. spectral sensitivity	950 nm
sensor system	Si + filter
Working temperature	-55 - +80°C -70 - +170 °F
Signal output	0V - 5V/ 4 - 20 mA(adjustable)
Power supply	+9V - +24V/*+14V+24V **RL(0-100Ohm)
Installation	2 screws M4 in the bottom

Connector cable	downward
Diffusor material	PTFE
Dome material	optical Glass
Cosine correcture	error f2 < 1.5%
Linearity	< 1%
Abs. error	< 10 %
Dark voltage (E=0)	< 10 mV
Weight	400g 14 oz

Specifications are subject to change without prior notice.

Dimensions:



Indium Sensor
Virchowstr. 7
15366 Neuenhagen
Germany
Tel: +49(0)3342 80239
Fax: +49(0)3342 207886